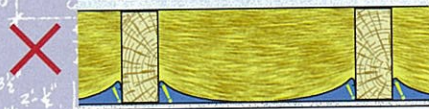


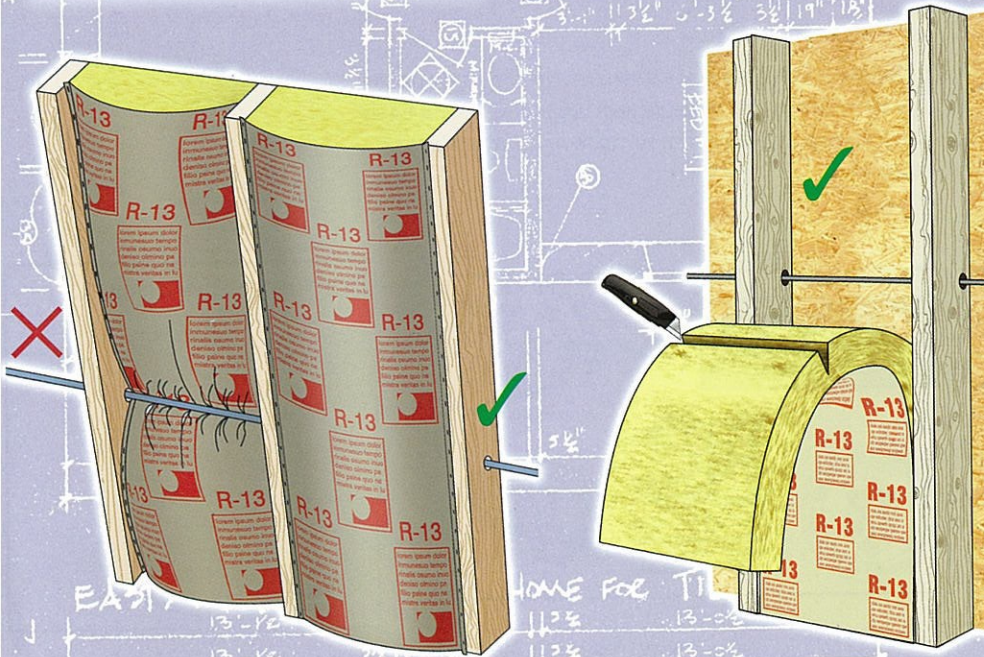
# QUALITY INSULATION

Avoid building uninsulated pockets at corners and wall intersections. Use advanced framing to create space for insulation. (see Advanced Framing for Energy Efficiency factsheet)



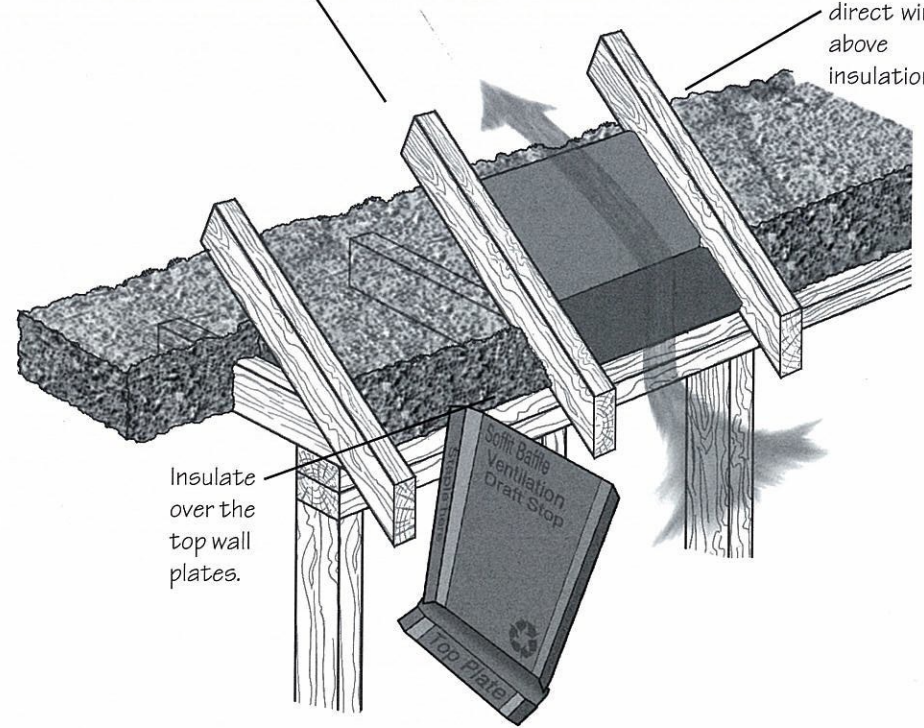
Install wall insulation to completely fill the cavity. Eliminate air gaps. Staple insulation batt flange to surface of studs. Ensure all six sides of a batt are in full contact with surrounding materials.

Completely fill all spaces with insulation. Do not leave gaps. Avoid compression of insulation. Split insulation around wiring and cut to fit around then insulate behind electrical boxes.



Blown insulation is preferred in attics. It provides continuous coverage.

Avoid wind washing at soffit vents. Use wind baffles to direct wind above insulation.



Don't forget to insulate and weatherstrip the attic hatch. Be sure to insulate the outside wall before installing bath tubs or showers. Insulate the furnace and water heater closet walls.



For more information: